



Enhancing Learning with AI: A Human-Centred Approach

AI is transforming learning.

Are we using it to enhance the human experience or just to automate everything?

This guide explores how AI can **support instructional design** while keeping the **human touch** at the core of learning.



AI Should Serve Learning, Not the Other Way Around

AI should enhance engagement, not just automate content.

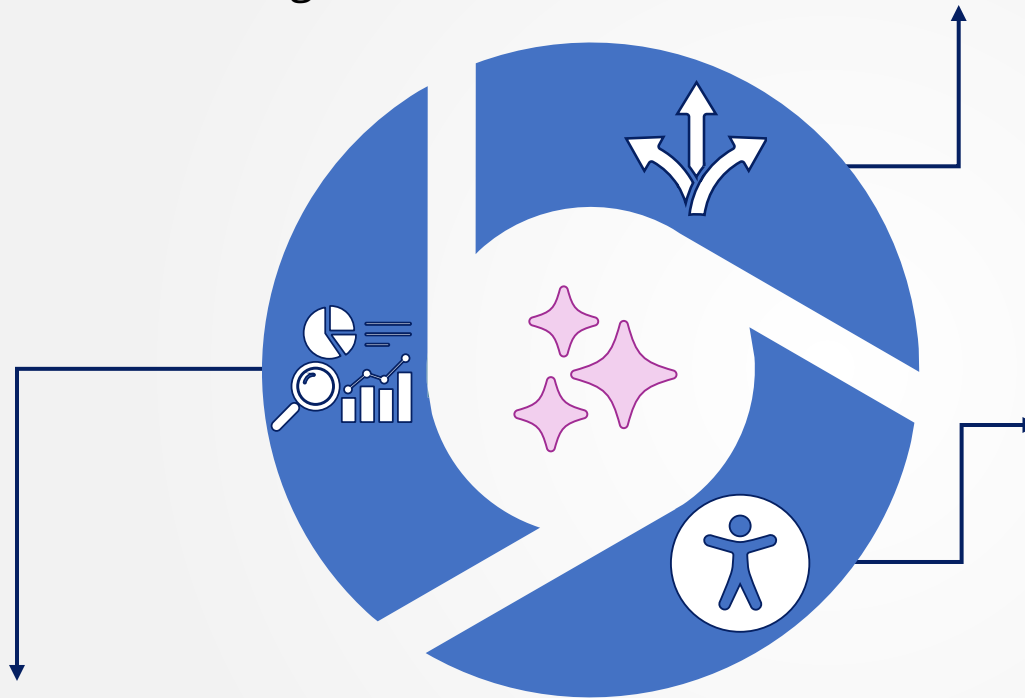
AI frees up IDs/LXDs to focus on learners, building relationships and creating high-impact experiences that produce measurable results and outcomes.

AI shouldn't replace instructional design - it should enhance it.

AI-Driven Personalisation

AI can tailor learning paths and content dynamically based on individual needs, roles, and performance data, increasing relevance and saving time.

Use AI tools to create adaptive assessments, personalise pathways and to assist with curating follow-on content.



Enhancing Accessibility

AI automates features like captions, text-to-speech, and real-time translations, enhancing content engagement. A screen-reader-friendly course script supports visually impaired and doubles as a podcast for neurodiverse and mobile learners.

Ensure your learning meets WCAG standards.

Data-Driven Insights

AI-powered analytics provides insights into learner engagement and performance, allowing you to continuously iterate for effectiveness.

Use data from learning systems or platforms to refine instructional strategies and inform content updates.



AI Should Serve Learning, Not the Other Way Around

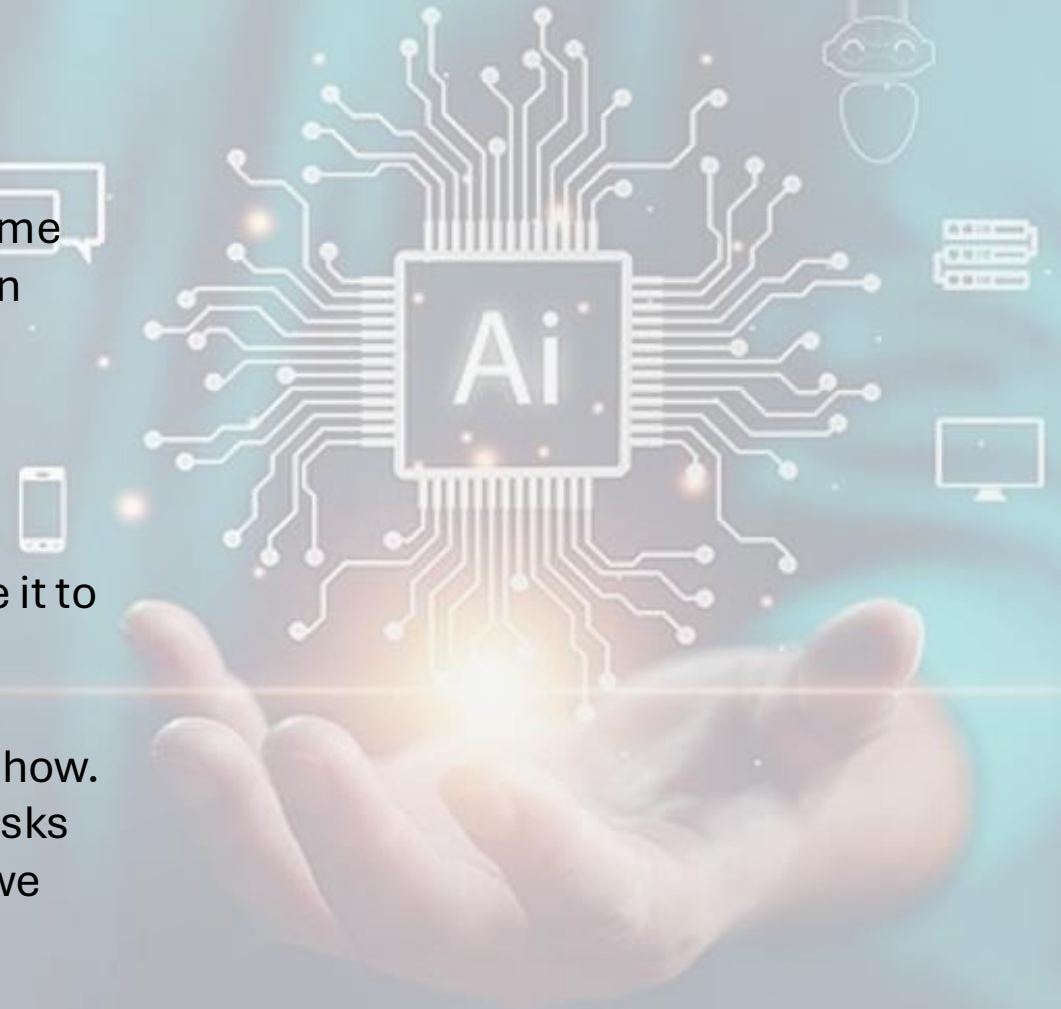
Beyond good intentions

AI, and our information age as a whole, is wild; full of promise and potential. But it also has its limits and some of those promises don't quite deliver . . . what has been true, remains true:

Garbage In, Garbage Out

The toolkit is only going to be as useful as what we give it to work with.

We forget our **key** place when we let the tech run the show. AI is a co-pilot and assistant; we should give it clear tasks based on **our** deep understanding and let it assist so we can give our people genuine value.





AI Should Serve Learning, Not the Other Way Around

Action checklist

- ✓ Identify learner needs and the problem you need to solve.
- ✓ Choose AI tools that support personalisation, accessibility and compliance.
- ✓ Implement adaptive content strategies based on user performance.
- ✓ Use analytics to track engagement and refine content regularly.
- ✓ Incorporate and test accessibility features.



AI Should Serve Learning, Not the Other Way Around

Do yourself and your learning audience a favour - explore ways to leverage AI in your learning strategies.

Let's connect!

Looking to enhance accessibility, improve engagement, or refine instructional strategies? I specialise in creating effective, technology-enhanced, AI-supported learning experiences that empower people with human-centric learning solutions.

[Explore my work and connect](#)